

Nodularity and Ferrite Pearlite Evaluation of Nodular Cast Iron as per ASTM A247 V1.5

Date: 28/04/06
 User: Benjamin

Analyzed Area(mm²): 11.51
 Calibration (mic/pix): 1.2642 μm/pixel
 Units: microns
 Density (1/mm²): 108.91
 Nodularity by Count: 76.10
 Nodularity by Area: 62.08
 JIS G 5502: 84.40

Mag.: 50x
 Fields Step 1: 9
 Fields Step 2: 9
 Graphite %: 13.69
 Pearlite %: 75.03
 Ferrite %: 11.28
 Pores %: 0.00

Sample ID: control
 Graphine Type(s): I
 Graphite Distribution: n/a
 Graphite Size Class: 5

	Count	%
Over	0	0.00
1	0	0.00
2	0	0.00
3	1	0.08
4	77	6.51
5	513	43.36
6	350	29.59
7	146	12.34
8	96	8.11

Mean: 42.37 μm
 Corresponding Size Class: 5
 Count: 1183

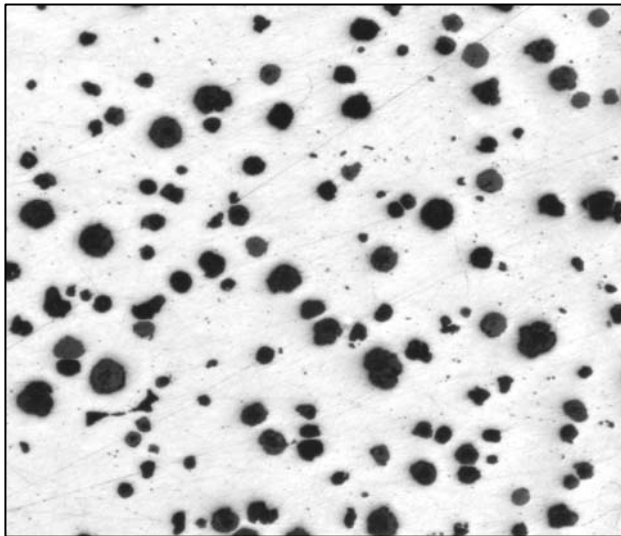
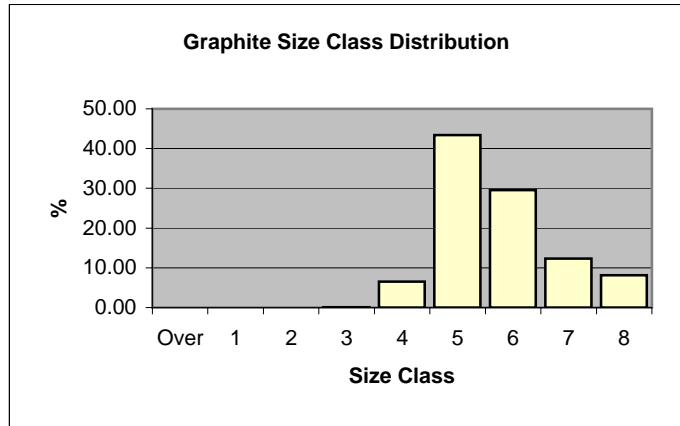


Figure 1: Nodules

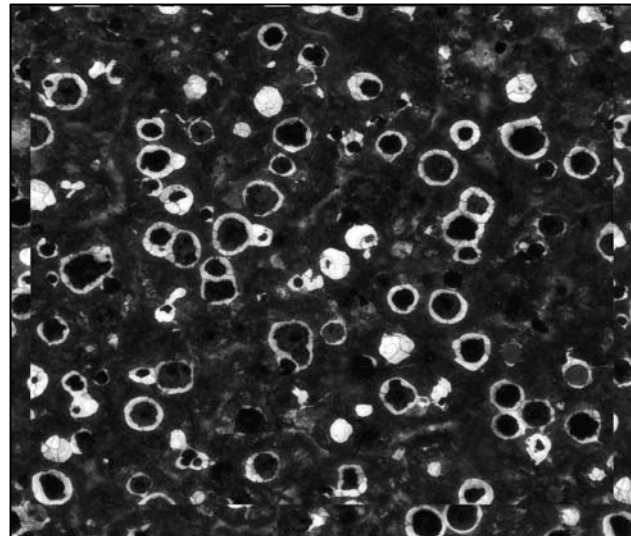


Figure 2: Ferrite and pearlite.

The current analysis have not been added to the summary file.