

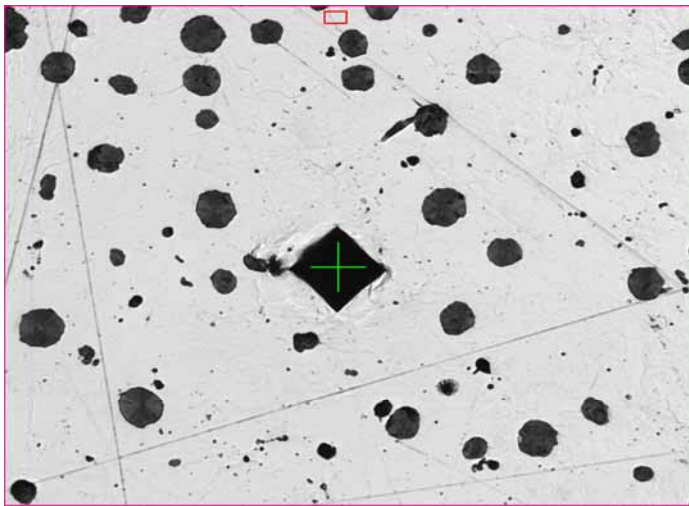
### HARDNESS AND NODULARITY ASSESMENT OF V-6 ENGINE CASTING

Report Type: V-6 Engine Casting QC  
Sample ID: LA 875

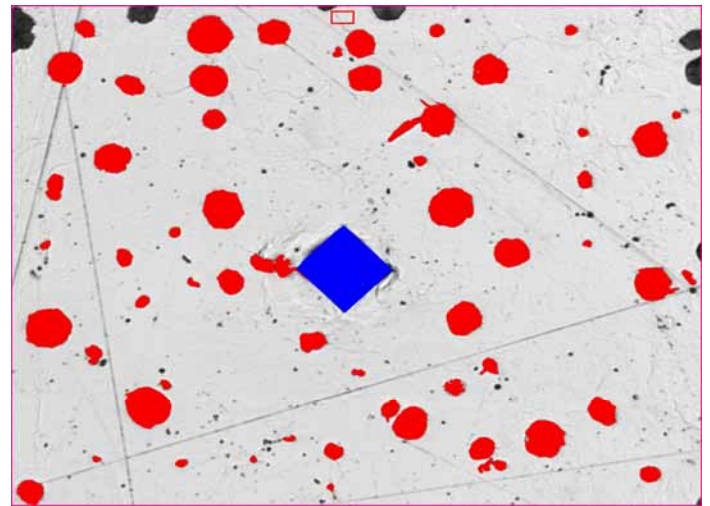
Department: R&D  
Operator: J. R. Ewing

**Analysis Type:**

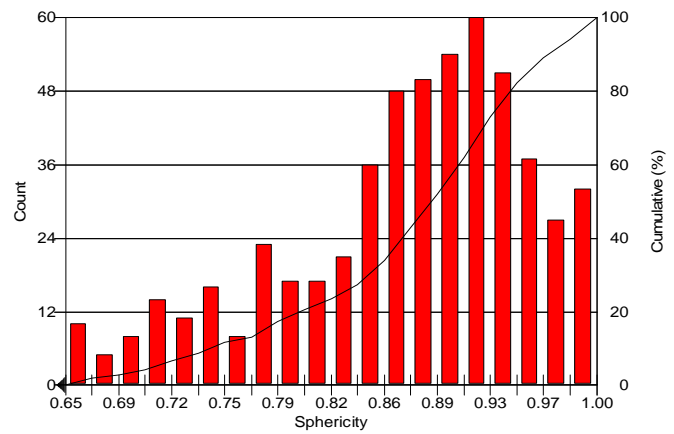
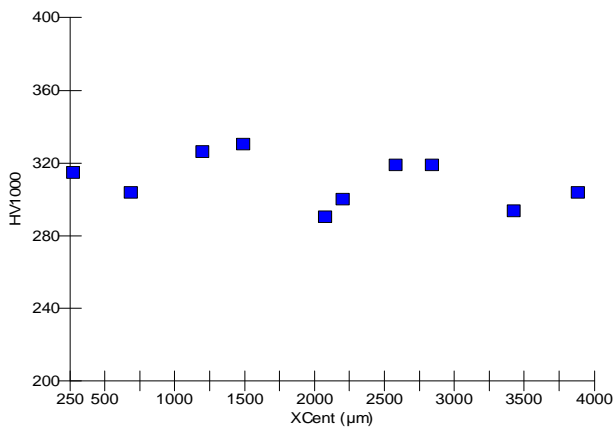
Analysis to determine Nodularity and Vickers Hardness of V-6 Engine casting



Original image after indent



Graphite Nodules and Indent detected



Min: 290 HV  
Max: 330 HV  
Avg: 310 HV  
STD: 13.7 HV

n: 545  
Nodularity: 89.1 %  
(above 0.65)

**Comments:**

**PASS**